

NEW YORK INSTITUTE
OF TECHNOLOGY



NAVIGATING
YOUR ARRIVAL

Your Quick International Arrival Guide

Steps to Take Before Leaving Your Home Country

We're excited to welcome you to New York Tech. Before you travel to New York, please make sure to complete these important tasks.

1 ACCESS YOUR PERSONALIZED ADMISSIONS PORTAL

nyit.edu/welcome

Log in to your Admissions Portal for personalized details on the next steps you need to take:

- Explore your Admissions Portal to learn about the enrollment process.
- Find out how to register for classes and orientation.
- Get information related to your program and campus.



2 PAY YOUR DEPOSIT

nyit.edu/welcome

Your nonrefundable deposit will be applied to your tuition bill. By submitting your deposit, you are letting us know of your intention to enroll at New York Tech.

Undergraduate Students

The deposit deadlines are listed below. If you are admitted after the deadline, you must submit your deposit within two weeks of acceptance.



DECEMBER 1

Deposit deadline for the spring semester

MAY 1

Deposit deadline for the fall semester

Graduate Students

Submit your deposit according to the instructions included on your acceptance letter. Most programs have a deposit deadline of four weeks from the date of the letter.

Steps to Take Before Leaving Your Home Country

3 APPLY FOR YOUR STUDENT VISA

usvisas.state.gov

Learn about the visa application process and make an appointment with the nearest United States consulate to apply for your student visa.



TIPS

Recent changes in United States laws governing visa policy and procedures have increased the amount of time it takes to obtain a visa. **Apply early for your student visa!**

Bring the following documentation to your visa appointment: passport, I-20, visa application, application fee payment receipt, photo, transcripts/diplomas, standardized test scores, official admission decision letter, and any other required items.

4 DECIDE WHERE YOU WANT TO LIVE

nyit.edu/housing

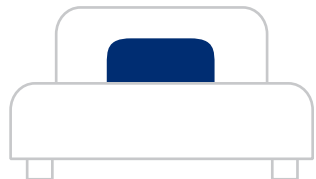
Learn more about our residence halls and off-campus housing, get a housing application, and more.

New York Tech Residence Halls

We offer two state-of-the-art residence halls near our campuses in Long Island and New York City. If you wish to live in one of them, complete your housing application and submit the deposit to reserve your space.

Off-Campus Housing

If you want to live off campus, we recommend you start to search for housing before arriving in New York. Visit our website for information about off-campus housing to find out if it's a good option for you.

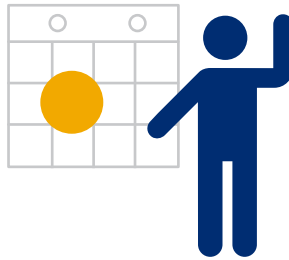


Steps to Take Before Leaving Your Home Country

5 SIGN UP FOR INTERNATIONAL STUDENT ORIENTATION AND SEVIS CHECK-IN nyit.edu/orientation

You must register for and prepare to attend the mandatory international student orientation and SEVIS check-in. At this in-person event, we'll welcome you and ask for your visa information, including the SEVIS number on your I-20 form. SEVIS check-in is typically held in January for the spring semester and August for the fall semester.

The international student orientation and SEVIS check-in will be held in-person at the Long Island and New York City campuses. We will keep you informed of any changes.



6 SEND US PROOF OF IMMUNIZATIONS

nyit.edu/immunization

Refer to our website to see which immunizations are required and to submit your immunization form(s) before the start of your first semester. Based on your country of residence, you may be required to submit the Tuberculosis Testing Form as well as the required Student Immunization Form. If you are under 18, your parent/guardian must sign all forms. Forms must have an official stamp from your healthcare provider. Ask your physician to submit your immunization documents to the Office of Wellness Services. Use our immunization form, or ask your physician to use their own version. Submit the completed form(s) online.



Steps to Take Before Leaving Your Home Country

7 SEND US YOUR FINAL OFFICIAL DOCUMENTS

nyit.edu/upload

Please send us your documents electronically through nyit.edu/upload or physically through the mail. Our physical mailing address is: Office of Admissions, P.O. Box 8000, Old Westbury, NY 11568, USA. Official documents must be submitted prior to the start of classes. After your first semester, you can only enroll in classes once you have submitted final versions of your official test scores such as the TOEFL, IELTS, PTE, Duolingo, SAT, GRE, or GMAT (if required), and official transcripts (and/or individual mark sheets) for high school and/or college-level coursework as well as proof of graduation or degree. New York Tech participates in several electronic transcript networks, including the National Student Clearinghouse, Parchment Exchange, Scoir, and eSCRIP-SAFE, making it easier for you to send official transcripts directly before you arrive.



8 PLAN YOUR TRIP TO NEW YORK

nyit.edu/welcome

As an international student with an I-20 and visa, you can enter the United States a maximum of 30 days before the first day of classes. The spring semester begins at the end of January and the fall semester begins in early September. The earliest arrival date into the U.S. will be listed on your I-20. Make sure you arrive in time for SEVIS check-in at New York Tech. Find out when your classes start by checking your Admissions Portal.



Arriving in New York

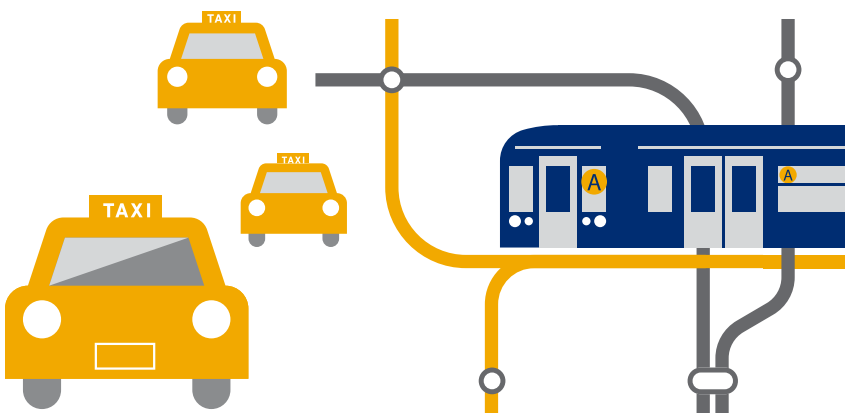
We recommend that you arrive before the semester begins so you have time to familiarize yourself with the campus and get comfortable before classes start.

KNOW WHERE YOU'RE GOING

nyit.edu/oie

Make sure you have the address of your residence or housing with you when you arrive in New York; U.S. Customs and Border Protection will ask you for your address. Check in to your housing before coming to campus.

The fastest (though more expensive) way to get to the New York City or Long Island campus from New York-area airports is by taxi, Uber, or Lyft. Follow the signs for taxis and rideshares at the airport. Less expensive options include the train or subway.



IN CASE OF AN EMERGENCY

If you are detained at a United States point of entry during regular business hours (9 a.m.–5 p.m., Monday–Friday), call our Office of International Education at 1.212.261.1684 (New York City) or 1.516.686.7526 (Long Island).

If you are in an emergency situation and our Office of International Education is not available, call Campus Security at 1.646.273.7789 (New York City) or 1.516.686.7789 (Long Island) and explain your situation.

TIPS

Get information about New York City subways, buses, and the Long Island Railroad online at mta.info.

Many hotels in New York only accept payment by credit card. If you do not have a credit card, make sure you book a hotel that accepts cash.

Living in New York

We're here to support you as you adjust to living and studying in New York. Even if you have visited the United States in the past, it can take time to settle into a new culture and environment.

LONG ISLAND CAMPUS

The Long Island campus is located in a quiet setting about 53 kilometers outside of New York City. Classroom buildings are connected by wooded and tree-lined walkways.



NEW YORK CITY CAMPUS

This campus is located in the heart of New York City, one of the world's most international cities. It is within walking distance of Lincoln Center and Central Park, easily accessible via subway and bus, and close to the city's best concert halls, theaters, museums, libraries, and restaurants.



CHOOSING A CAMPUS

You chose a primary campus when you applied—Long Island or New York City—but you can take classes and participate in activities at both campuses while you are a student. If you decide you want to attend a different primary campus than the one you originally selected, sign up for an orientation session at the campus where you would now like to study and speak with a staff member about changing your campus designation.



TIPS

New York weather changes with the seasons. Pack for warm and cold temperatures.

It is normal to experience culture shock during your first semester. Be patient, keep an open mind, and give yourself time to adjust to your new environment. And check out our events and resources to help you with the adjustment.

Think of your time in New York as an adventure and stay positive.

Remember to keep a sense of humor as you adjust to life in the United States.

Registering for Classes

UNDERGRADUATE STUDENTS

nyit.edu/welcome

We will notify you via email and in your Admissions Portal about your requirements and how to register for classes.

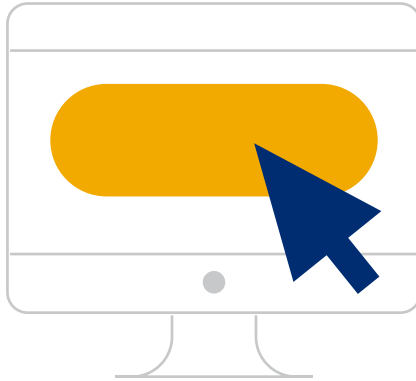
Certain programs are more math-based and require students to take a math exam.

After you complete your exams (if required), you will need to schedule an appointment with an advisor to register for classes.

GRADUATE STUDENTS

nyit.edu/advisors

Your academic advisor will offer suggestions about the courses you need and help you register online at **my.nyit.edu**. We will contact you via email with more information.



Registration typically opens in November for the spring semester and April for the fall semester. It is important that you register for classes early to stay on track.

Registering for Classes

PAYING TUITION

nyit.edu/bursar

After you register for classes, you will need to pay your tuition bill and accept your scholarship, if applicable. You may want to consider enrolling in a payment plan to pay your tuition in more manageable monthly installments. A small fee will apply. You can enroll online at my.nyit.edu.

New York Tech has partnered with Flywire to provide our international students with an easy and secure method to send international payments in your home currency via bank transfer or by using an international credit card. With Flywire, you are offered competitive foreign exchange rates, allowing you to pay in your home currency (in most cases) and save on unexpected bank fees. Payment can be made directly through my.nyit.edu.



SET UP YOUR MY.NYIT.EDU ACCOUNT

my.nyit.edu

This online account will be used throughout your time as a student here. This is in addition to your Admissions Portal.

At this webpage, you can:

- Pay your tuition bill.
- Access your email.
- Accept your scholarship (if applicable).
- View your class schedule and transcripts.

Your Path to Success

Studying abroad and exploring a new culture can be both rewarding and challenging. Congratulations on starting this exciting journey.

1

Study and work hard from the beginning.



2

Ask questions and participate in class.



3

Talk to your professors.



4

Make friends, form a study group, and get involved in student activities.



5

Remember your goals and why you came here.



Learn more about your next steps

nyit.edu/welcome

New York Institute of Technology

Office of Admissions

1.516.686.7520

admissions@nyit.edu

#HeadedToNewYorkTech

[f](#) [X](#) [@](#) [♪](#) [▶](#) [in](#)

STATEMENT ON NON-DISCRIMINATION

New York Institute of Technology does not discriminate in admissions, access to, operation of, treatment or employment in its programs and activities on the basis of race, color, national origin, religion, creed, ethnicity, disability, age, marital status, sex, gender, sexual orientation, gender identity, veteran status, or any other legally protected status. The following person has been designated to handle inquiries regarding this non-discrimination statement or inquiries regarding Section 504 of the Rehabilitation Act of 1973 or Title IX of the Education Act of 1972: Melissa D. Wallace, Esq., Equity Officer and Title IX Coordinator, New York Institute of Technology, Tower House, Room 106, Old Westbury, NY 11568, 516.686.1080, titleix@nyit.edu. For additional contacts and resources, visit nyit.edu/titleix. Individuals may also contact the U.S. Department of Education's Office for Civil Rights.